



## Palmerston Road, Walthamstow, London

Nestled within a sought-after private development, this well-presented three-bedroom end-of-terrace family home offers a superb combination of space, privacy and convenience in the heart of Walthamstow.

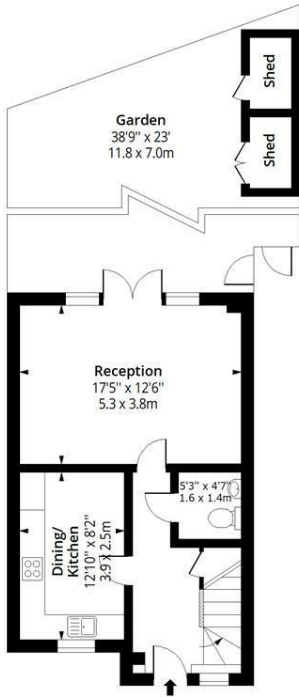
The property benefits from a private driveway providing off-street parking, a highly desirable feature in this popular residential location. Internally, the home offers bright and well-proportioned accommodation throughout, with a spacious reception room, a fitted kitchen, and three bedrooms arranged over the upper floors, making it an ideal purchase for families, first-time buyers and commuters alike.

As an end-of-terrace property, the house enjoys additional privacy, extra natural light and a wider plot than many neighbouring homes. The private development provides a peaceful setting while remaining within easy reach of local amenities, excellent transport links and the vibrant shops, cafés and restaurants that Walthamstow has become renowned for.

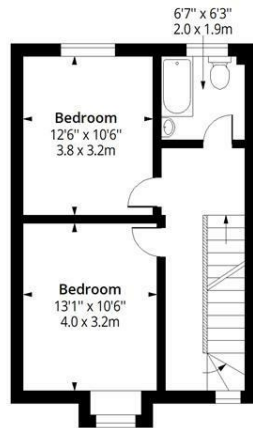
Offering comfortable modern living in a quiet residential environment, this attractive home represents an excellent opportunity to acquire a property in one of East London's most desirable and well-connected neighbourhoods.

- Three Bedroom Family Home
- Converted Loft With An En-Suite Bathroom
- Private Rear South Facing Garden
- EPC Rating - C
- 0.3m To St James Street
- 0.5m To Walthamstow Central
- Off Street Parking
- 1271 Sq Ft (118.08 SQ M)

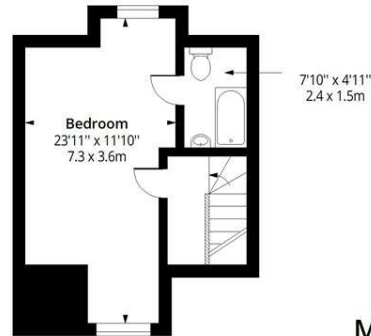
£800,000



**Ground Floor**  
Floor Area 479 Sq Ft - 44.50 Sq M



**First Floor**  
Floor Area 456 Sq Ft - 42.36 Sq M



**Second Floor**  
Floor Area 336 Sq Ft - 31.21 Sq M

**Marias Gardens E17**



Approx. Gross Internal Area  
1271 Sq Ft - 118.08 Sq M  
Approx. Gross Shed Area  
39 Sq Ft - 47.38 Sq M



Measured according to RICS IPMS2. Floor plan is for illustrative purposes only and is not to scale. Every attempt has been made to ensure the accuracy of the floor plan shown, however all measurements, fixtures, fittings and data shown are an approximate interpretation for illustrative purposes only. 1 sq m = 10.76 sq feet.

